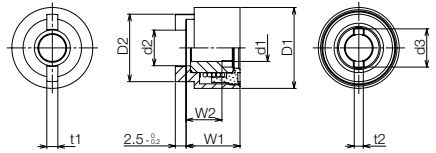




Spring friction torque limiters

Features

- Various torque selections
- Small size
- Light weight
- Reasonable price



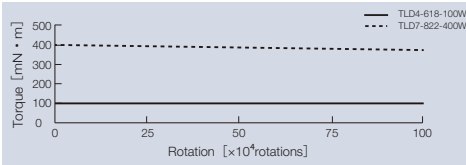
General Tolerance : ±0.2

Standard specifications

Application shaft [mm]	Allowable Rotation Speed [min ⁻¹]	Rotation Direction	Dimensions [mm]										Torque [mN·m] (lbf·in)	Product name
			t1	D2	d2	W2	W1	d1	D1	t2	d3			
Φ6 ⁺⁰ _{-0.03}	400	Bidirectional	2.5 ⁰ _{-0.1}	15 ⁰ _{-0.2}	8.2 ^{+0.2} ₀	8	12	6 ^{+0.08} _{+0.02}	18 ^{+0.1} _{-0.2}	2 ^{+0.10} _{+0.02}	8.4 ^{+0.2} ₀	19.6 (0.173)	TLD4-618-20W	
												29.4 (0.260)	TLD4-618-30W	
												39.2 (0.347)	TLD4-618-40W	
												49.0 (0.434)	TLD4-618-50W-1	
												58.8 (0.520)	TLD4-618-60W	
												68.6 (0.607)	TLD4-618-70W-1	
Φ8 ⁺⁰ _{-0.036}	50		4 ⁰ _{-0.1}	17 ⁰ _{-0.2}	8.2 ^{+0.2} ₀	11.5	15.5	8 ^{+0.10} _{+0.02}	22 ^{+0.1} _{-0.3}	2.1 ^{+0.10} _{+0.08}	10.4 ^{+0.2} ₀	196.0 (1.735)	TLD7-822-200W	
												392.0 (3.469)	TLD7-822-400W	

Product specifications

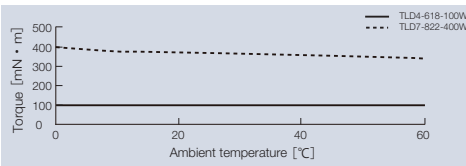
Durability Tested at allowable rotational speed.



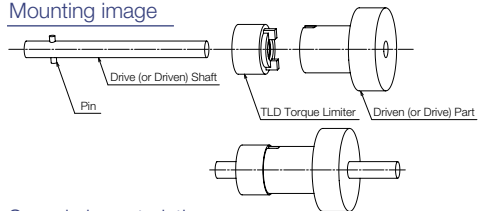
Main materials

Housing	Plastic (POM)
Cap	Plastic (POM)
Sleeve	Iron-based sintering
Spring	Piano wire
Washer	Plastic (PET)

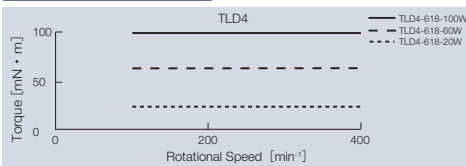
Temperature characteristics Measured at allowable rotational speed.



Mounting image



Speed characteristics



Speed characteristics

