

TORQUE LIMITERS

TLEU

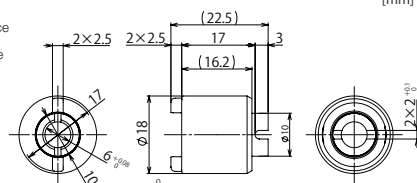
RoHS compliant



Magnetic hysteresis torque limiters

Features

- Torque is generated by the magnetic force
- Wide variety of torque as the same shape
- Small size
- Light weight
- High durability
- High allowable rotation speed
- Low torque ripple
- Good heat dissipation due to the aluminum housing



General Tolerance : ± 0.3

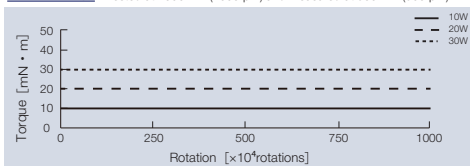
Standard specifications

| Application shaft [mm] | Allowable rotation speed [min ⁻¹] | Rotation direction | Torque [mN·m] (lbf·in) | Product name |
|---------------------------|---|--------------------|---------------------------|---------------|
| $\Phi 6^{+0}_{-0.03}$ | 2000 | Bidirectional | 5 (0.044) | TLEU1-618-5W |
| | | | 10 (0.089) | TLEU1-618-10W |
| | | | 15 (0.133) | TLEU1-618-15W |
| | | | 20 (0.177) | TLEU1-618-20W |
| | | | 25 (0.221) | TLEU1-618-25W |
| | | | 30 (0.266) | TLEU1-618-30W |
| | | | 35 (0.310) | TLEU1-618-35W |
| | | | 40 (0.354) | TLEU1-618-40W |

Product specifications

Durability

Tested at 2000min⁻¹(2000rpm) and measured at 500min⁻¹(500rpm)

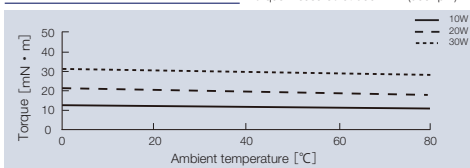


Main materials

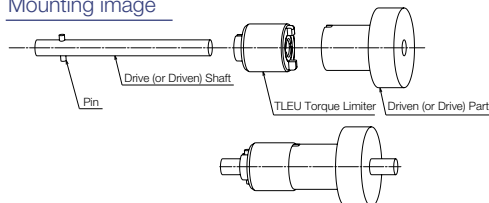
| | |
|---------|---|
| Housing | Aluminum |
| Sleeve | Super engineering plastic |
| Bush | Copper sintering |
| Magnet | Neodymium-based bond magnet Semi-hard magnet |

Temperature characteristics

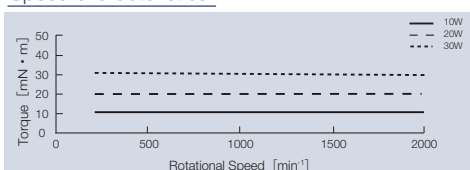
Torque measured at 500 min⁻¹ (500 rpm)



Mounting image



Speed characteristics



TOK, Inc.

1-17-12, Azusawa, Itabashi, Tokyo, 174-8501, Japan

Tel +81-3-3969-1584 Web tok-inc.com/en

CAD data download

