

TORQUE LIMITERS TLEU

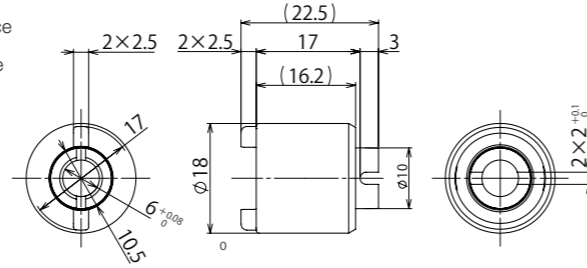
RoHS compliant



Magnetic hysteresis torque limiters

Features

- Torque is generated by the magnetic force
- Wide variety of torque as the same shape
- Small size
- Light weight
- High durability
- High allowable rotation speed
- Low torque ripple
- Good heat dissipation due to the aluminum housing



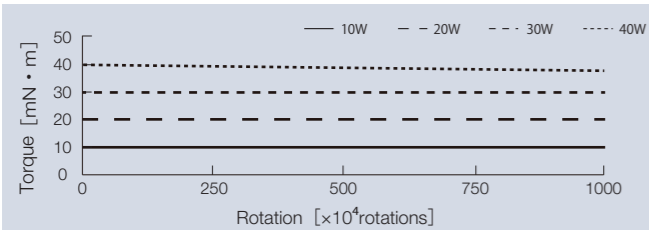
General Tolerance : ± 0.3

Standard specifications

Application shaft [mm]	Allowable rotation speed [min^{-1}]	Rotation direction	Torque [mN·m] (lbf·in)	Product name
			10 (0.089)	TLEU1-618-10W
			15 (0.133)	TLEU1-618-15W
			20 (0.177)	TLEU1-618-20W
			25 (0.221)	TLEU1-618-25W
			30 (0.266)	TLEU1-618-30W
			35 (0.310)	TLEU1-618-35W
			40 (0.354)	TLEU1-618-40W

Product specifications

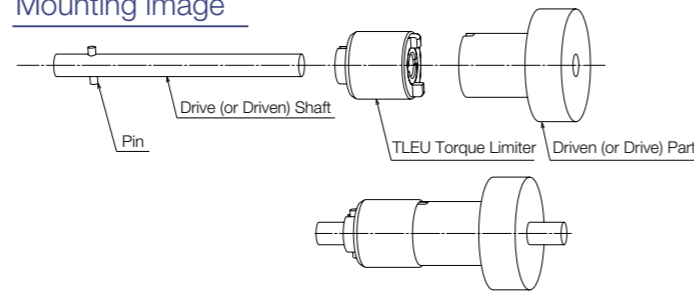
Durability Tested at 2000min^{-1} (2000rpm) and measured at 500min^{-1} (500rpm)



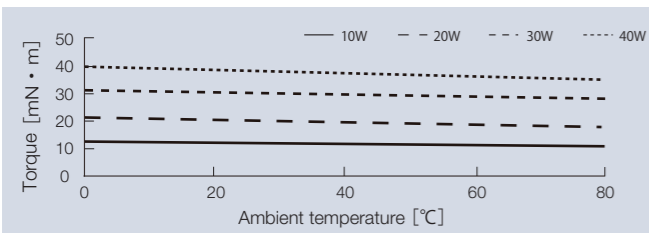
Main materials

Housing	Aluminum
Sleeve	Super engineering plastic
Bush	Copper sintering
Magnet	Neodymium-based bond magnet Semi-hard magnet

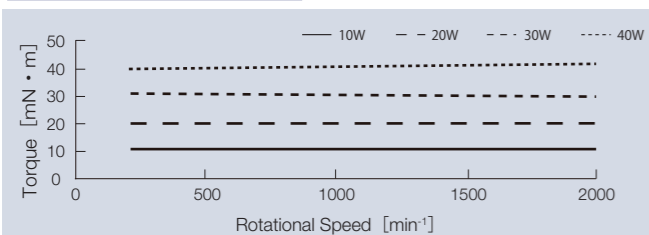
Mounting image



Temperature characteristics Torque measured at 500min^{-1} (500 rpm)



Speed characteristics



TOK, Inc.

1-17-12, Azusawa, Itabashi, Tokyo, 174-8501, Japan
Tel +81-3-3969-1584 Web tok-inc.com/en

CAD data download



TORQUE LIMITERS TLD

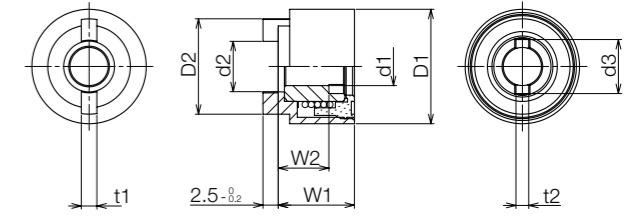
RoHS compliant



Spring friction torque limiters

Features

- Various torque selections
- Small size
- Light weight
- Reasonable price



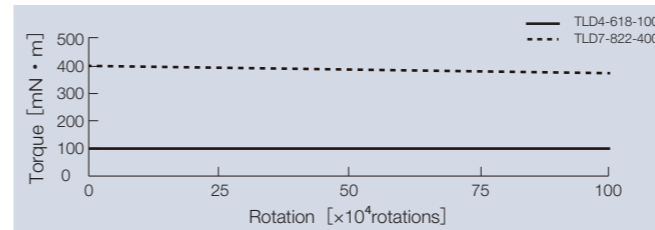
General Tolerance : ± 0.2

Standard specifications

Application shaft [mm]	Allowable Rotation Speed [min^{-1}]	Rotation Direction	Dimensions [mm]								Torque [mN·m] (lbf·in)	Product name	
			t1	D2	d2	W2	W1	d1	D1	t2			d3
$\Phi 6^{+0}_{-0.03}$	400	Bidirectional	2.5 $^{0}_{-0.1}$	15 $^{0}_{-0.2}$	8.2 $^{+0.2}_{0}$	8	12	6 $^{+0.08}_{+0.02}$	18 $^{+0.1}_{-0.2}$	2 $^{+0.10}_{+0.02}$	8.4 $^{+0.2}_{0}$	19.6 (0.173)	TLD4-618-20W
												29.4 (0.260)	TLD4-618-30W
												39.2 (0.347)	TLD4-618-40W
												49.0 (0.434)	TLD4-618-50W-1
												58.8 (0.520)	TLD4-618-60W
												68.6 (0.607)	TLD4-618-70W-1
												98.0 (0.867)	TLD4-618-100W
$\Phi 8^{+0}_{-0.036}$	50		4 $^{0}_{-0.1}$	17 $^{0}_{-0.2}$	8.2 $^{+0.2}_{0}$	11.5	15.5	8 $^{+0.10}_{-0.02}$	22 $^{+0.1}_{-0.3}$	2.1 $^{+0.10}_{+0.08}$	10.4 $^{+0.2}_{0}$	196.0 (1.735)	TLD7-822-200W
												392.0 (3.469)	TLD7-822-400W

Product specifications

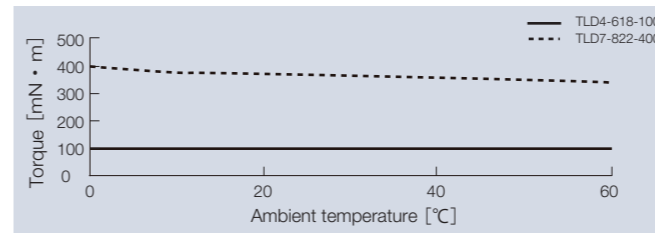
Durability Tested at allowable rotational speed.



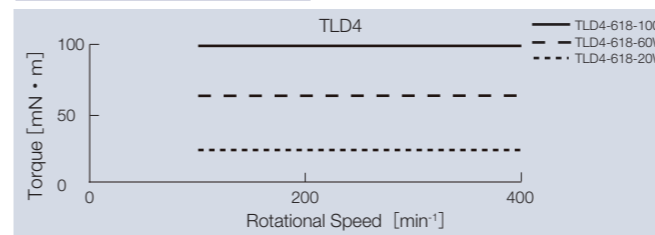
Main materials

Housing	Plastic (POM)
Cap	Plastic (POM)
Sleeve	Iron-based sintering
Spring	Piano wire
Washer	Plastic (PET)

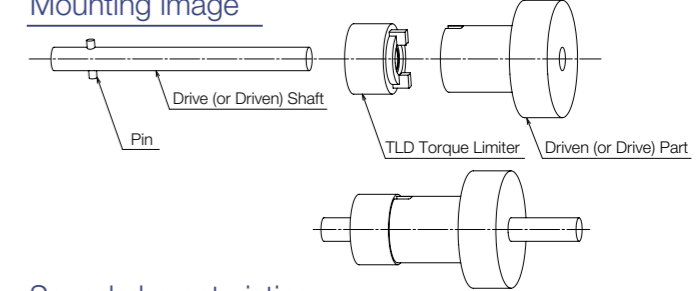
Temperature characteristics Measured at allowable rotational speed.



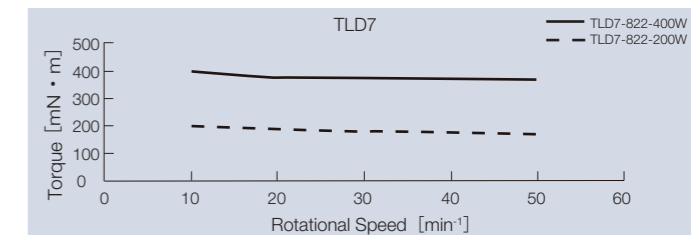
Speed characteristics



Mounting image



Speed characteristics



TOK, Inc.

1-17-12, Azusawa, Itabashi, Tokyo, 174-8501, Japan
Tel +81-3-3969-1584 Web tok-inc.com/en

CAD data download

